

3  
BED

type your text here  
19, Meeching Rise, Newhaven, BN9 9LB



£1,750 Per Calendar Month

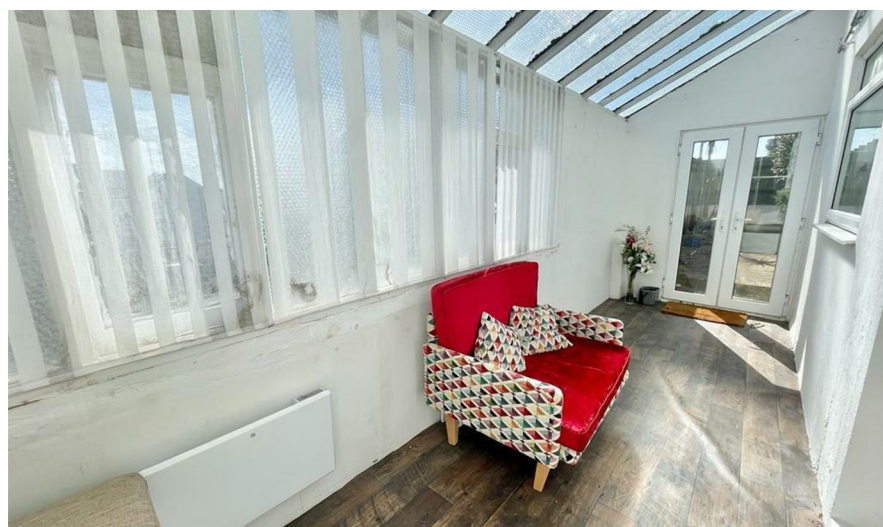
**phillipmann**  
we do more

[www.phillipmann.com](http://www.phillipmann.com)



## inbrief...

Superb 3 Bedroom House situated in a convenient location within paces of local bus routes, the Town Centre and within easy reach of the Railway Station. The accommodation comprises Entrance Hall, Lounge/Dining Room with feature fireplace and wood style flooring, Good Size Kitchen/Breakfast Room with range of white wall and base units and ample space for a table, double doors leading to Side Loggia which overlooks and affords access to the garden, Stairs Rise to First Floor Landing, Spacious Master Bedroom overlooking the front of the property, two further Bedrooms and Modern Bathroom/WC. Garden to the rear, Parking space for one small car. Unfurnished. Must be Viewed.



Council Tax Band C

Energy Rating D

moreinfo...

Phillip Mann Lettings Office  
16 Bridge Street, Newhaven, East Sussex, BN9 9PJ  
01273 517 517



To see more details on this & all our homes go to  
[www.phillipmann.com](http://www.phillipmann.com)